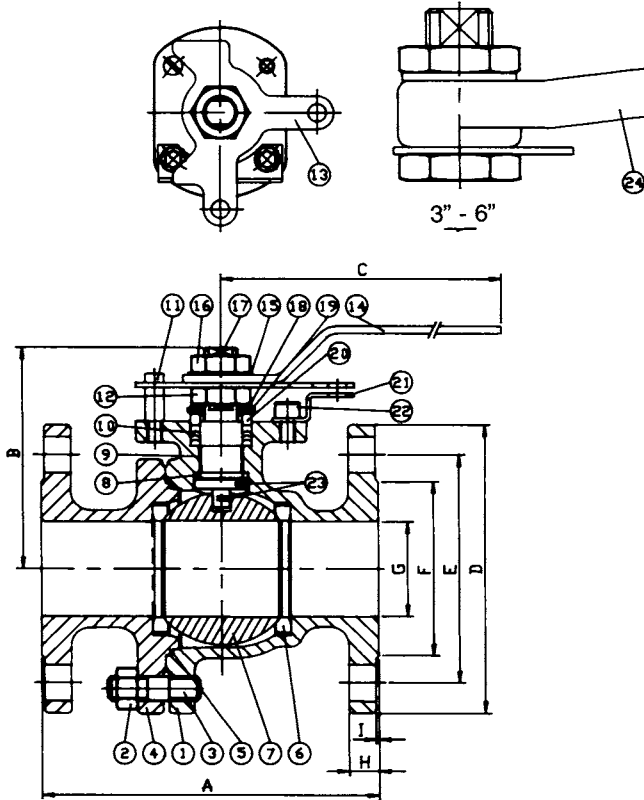




VALVES

STAINLESS STEEL CAST BALL VALVES

1/2" - 6" CLASS 150 FULLPORT



No.	Part Name	Material
1.	Body	ASTM A351 Gr. CF8M
2.	Nut	ASTM A194 Gr. 8
3.	Stud	ASTM A193 Gr. B8
4.	Cap	ASTM A351 Gr. CF8M
5.	Gasket	RTFE
6.	Seat	RTFE
7.	Ball	ASTM A351 Gr. CF8M
8.	Thrust Washer	RTFE
9.	Stem Bushing	RTFE
10.	Packing	PTFE
11.	Stop Pin	ASTM A276 Gr. 304
12.	Packing Nut	ASTM A194 Gr. 8
13.	Stop Plate	ASTM A276 Gr. 304
14.	Handle 1/2"-2-1/2"	ASTM A276 Gr. 304
15.	Washer	ASTM A276 Gr. 304
16.	Stem Nut	ASTM A194 Gr. 8
17.	Stem	ASTM A276 Gr. 316
18.	Lock Washer	ASTM A276 Gr. 304
19.	Belleville Washer	Stainless Steel
20.	Stem Follower	ASTM A276 Gr. 316
21.	Lock Plate	ASTM A276 Gr. 304
22.	Bolt	ASTM A193 Gr. B8
23.	Anti Static Device 1" - 6"	ASTM A276 Gr. 304
24.	Handle 3"-6"	ASTM A536 Gr. FCD45

FIGURE NUMBER 6156

Features

- Blow Out Proof Stem
- Anti Static Device
- Locking Device
- ISO 5211 Actuator Mounting Pad

Applicable Standards

- Shell wall thickness ANSI B16.34
- Face-to-Face Dimensions ANSI B16.10
- End Flange Dimensions ANSI B16.5
- Pressure Temperature Rating (valve shell) ANSI B16.34
- Pressure Test API 598

Valve Size	A	B	C	D	E	F	G	H	I	Cv Values Approx.	Torque Values * (In. - Lbs.)	Number of Holes & Diameter	Weight (Lbs.) Approx.
1/2"	4.25	2.54	5.60	3.50	2.38	1.38	0.50	0.44	1/16	15	50	4-5/8"	5
3/4"	4.62	2.65	5.60	3.88	2.75	1.69	0.75	0.44	1/16	61	65	4-5/8"	6
1"	5.00	3.10	5.60	4.25	3.12	2.00	1.00	0.44	1/16	110	80	4-5/8"	8
1-1/2"	6.50	4.35	7.90	5.00	3.88	2.88	1.50	0.56	1/16	270	200	4-5/8"	16
2"	7.00	4.65	7.90	6.00	4.75	3.62	2.00	0.62	1/16	500	325	4-3/4"	21
2-1/2"	7.50	5.35	7.90	7.00	5.50	4.12	2.50	0.69	1/16	800	450	4-3/4"	32
3"	8.00	6.85	13.80	7.50	6.00	5.00	3.00	0.75	1/16	1160	600	4-3/4"	42
4"	9.00	7.74	13.80	9.00	7.50	6.19	4.00	0.94	1/16	2120	1150	8-3/4"	68
6"	15.50	10.87	30.00	11.00	9.50	8.50	6.00	1.00	1/16	5070	3000	8-7/8"	166

*Estimated torque factors are at full differential pressure and clean service. Certain applications can alter the valve torque significantly. Please take into consideration your service conditions, differential pressure, frequency of operation, temperature, etc. when sizing actuators for our valves.

warren VALVES

STAINLESS STEEL CAST BALL VALVES

8" - 10" CLASS 150 FULLPORT

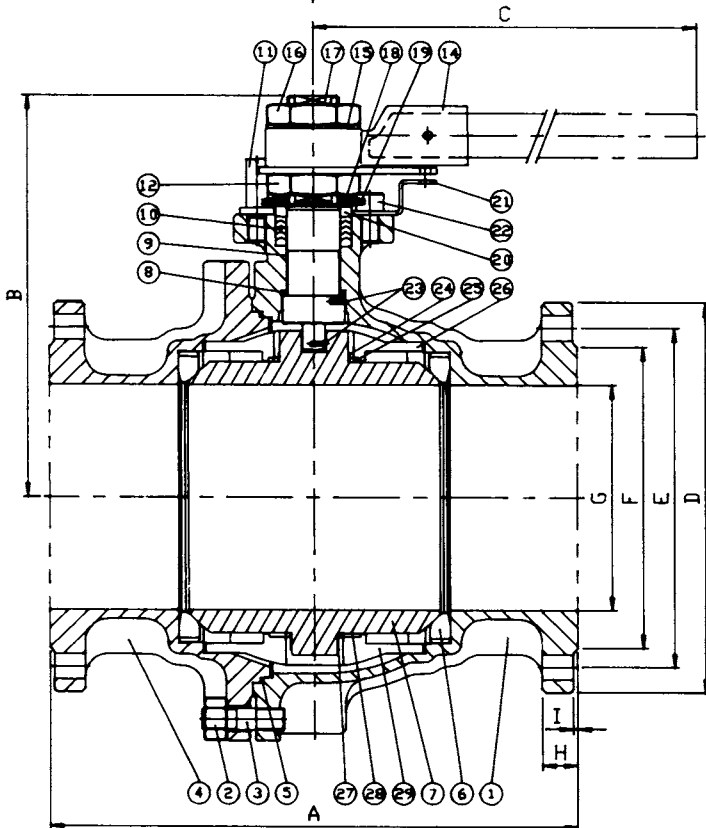
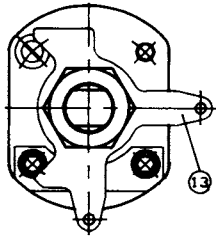


FIGURE NUMBER 6156

No.	Part Name	Material
1.	Body	ASTM A351 Gr. CF8M
2.	Nut	ASTM A194 Gr. 8
3.	Stud	ASTM A193 Gr. B8
4.	Cap	ASTM A351 Gr. CF8M
5.	Gasket	RTFE
6.	Seat	RTFE
7.	Ball	ASTM A351 Gr. CF8M
8.	Thrust Washer	RTFE
9.	Stem Bushing	RTFE
10.	Packing	PTFE
11.	Stop Pin	ASTM A276 Gr. 304
12.	Packing Nut	ASTM A194 Gr. 8
13.	Stop Plate	ASTM A276 Gr. 304
14.	Handle Adapter	ASTM A351 Gr. CF8
15.	Washer	ASTM A276 Gr. 304
16.	Stem Nut	ASTM A194 Gr. 8
17.	Stem	ASTM A276 Gr. 316
18.	Lock Washer	ASTM A276 Gr. 304
19.	Belleville Washer	Stainless Steel
20.	Stem Follower	ASTM A276 Gr. 316
21.	Lock Plate	ASTM A276 Gr. 304
22.	Bolt	ASTM A193 Gr. B8
23.	Anti Static Device	ASTM A276 Gr. 304
24.	Bearing	PTFE
25.	Gasket	MG-1241
26.	Support	ASTM A351 Gr. CF8M
27.	Bearing	PTFE
28.	Gasket	MG-1241
29.	Support	ASTM A351 Gr. CF8M

Features

- Blow Out Proof Stem
- Anti Static Device
- Locking Device
- 4- Bolt Design Actuator Mounting Pad

Applicable Standards

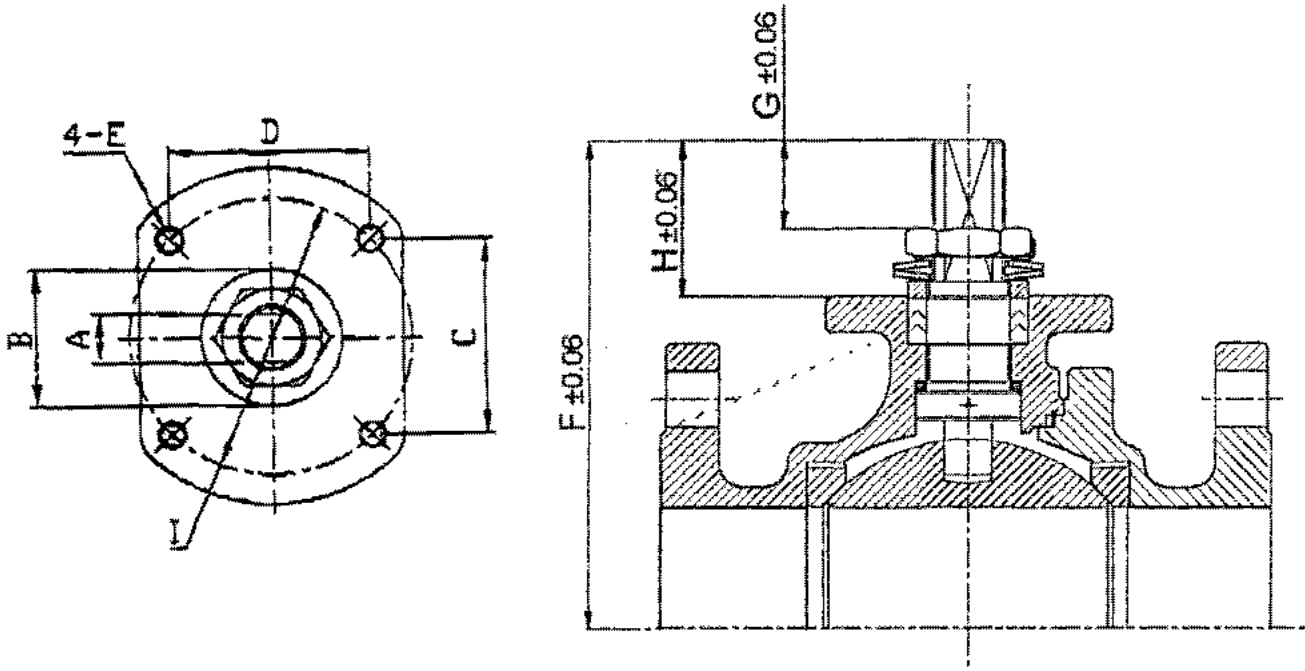
- Shell wall thickness ANSI B16.34
- Face-to-Face Dimensions ANSI B16.10
- End Flange Dimensions ANSI B16.5
- Pressure Temperature Rating (valve shell) ANSI B16.34
- Pressure Test API 598

Valve Size	A	B	C	D	E	F	G	H	I	Cv Values Approx.	Number Torque Values (In. - Lbs.)	Number of Holes & Diameter	Weight (Lbs.) Approx.
8"	18.00	13.90	30.00	13.50	11.75	10.62	8.00	1.12	1/16	9340	8300	8-7/8"	358
10"	21.00	15.40	40.00	16.00	14.25	12.75	10.00	1.19	1/16	14589	17000	12-1"	547

*Estimated torque factors are at full differential pressure and clean service. Certain applications can alter the valve torque significantly. Please take into consideration your service conditions, differential pressure, frequency of operation, temperature, etc. when sizing actuators for our valves.

Warren® VALVES

MOUNTING PAD DIMENSIONS CLASS 150



FULL PORT CLASS 150

Size	A	B	C & D	E	F	G	H	I	ISO 5211
1/2"	0.354	0.984	1.169	1/4" - 20UNC	2.598	0.650	0.906	1.653	F04
3/4"	0.354	0.984	1.169	1/4" - 20UNC	2.717	0.669	0.925	1.653	F04
1"	0.475	1.260	1.394	1/4" - 20UNC	3.071	0.610	1.024	1.969	F05
1-1/2"	0.512	1.260	1.949	5/16" - 18UNC	4.350	0.787	1.575	2.756	F07
2"	0.512	1.260	1.949	5/16" - 18UNC	4.646	0.787	1.575	2.756	F07
2-1/2"	0.512	1.260	1.949	5/16" - 18UNC	5.498	0.752	1.536	2.756	F07
3"	0.713	1.969	2.840	3/8" - 16UNC	6.969	1.614	2.520	4.016	F10
4"	0.713	1.969	2.840	3/8" - 16UNC	7.717	1.535	2.441	4.016	F10
6"	1.124	2.756	3.480	1/2" - 13UNC	10.787	2.600	3.661	4.921	F12
8"	1.260	3.543	3.898	5/8" - 11UNC	14.000	2.980	4.095	5.512	F14
10"	1.575	4.488	4.593	3/4" - 10UNC	15.453	2.913	4.626	6.500	F16