

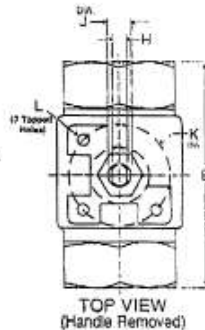
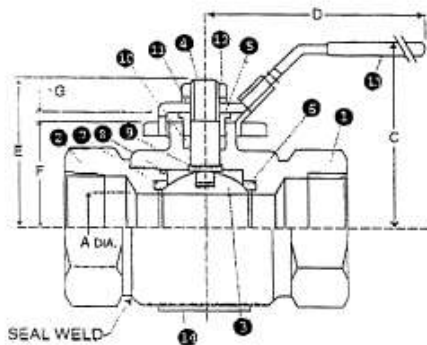
Warren® VALVES

Series W50

Seal Welded High Pressure Ball Valves 1/4" - 2" 5000 WOG

FEATURES

- SEAL WELDED CONSTRUCTION
- Full Port and Reduced Port Available
- All Stainless Construction - CF8M Bodies & Tailpieces, 316SS Internals
- 5000 WOG Rating on all sizes
- Derlin Seats and Viton Seals are Standard
- NACE MR-01-75 Compliant
- API 607 Fourth Edition Fire Safe
- Standard ISO Actuator Mounting Pads on all sizes
- Standard Locking Stainless Steel Handles
- The Ultimate Valve for Safe High Pressure Service

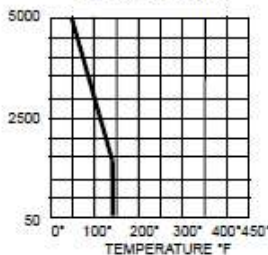


RATINGS
5000 PSIG @ 100F WATER, OIL, GAS
NO STEAM SERVICE RATING (DELRIN SEATS)

MATERIALS OF CONSTRUCTION

| PART | DESCRIPTION | STANDARD MATERIAL |
|------|----------------|---|
| 1 | BODY | ASTM A351 Gr.CF8M |
| 2 | TAILPIECE | ASTM A351 Gr.CF8M |
| 3 | BALL | ASTM A276 Gr.316 SS |
| 4 | STEM | ASTM A276 Gr.316 SS (1/4"-1") 174-PH (1-1/2"-2") |
| 5 | PACKING NUT | ASTM A276 Gr.316 SS |
| 6 | SEATS (2) | DELRIN 100AF |
| 7 | SEAT SEAL (2) | VITON |
| 8 | TAILPIECE SEAL | GRAPHITE |
| 9 | THRUST WASHER | PTFE |
| 10 | STEM PACKING | GRAPHITE |
| 11 | LOCK WASHER | 304 SS |
| 12 | HANDLE ASSY | 304 SS |
| 13 | HANDLE NUT | 304 SS |

DELRIN SEATS



DIMENSIONS, WEIGHTS, CV FACTORS & MAXIMUM OPERATING TORQUE

| SIZE | A | B | C | D | E | F | G | H | J | K | L | ISO | WEIGHT | Cv | MAX |
|----------|------|------|------|------|------|------|------|------|------|------|--------------|---|-------------------------------|-----|-----------|
| | | | | | | | | | | | | PATTERN <td>LBS <td></td> <td>TORQUE</td> </td> | LBS <td></td> <td>TORQUE</td> | | TORQUE |
| 1/4-3/8" | 0.25 | 3.00 | 2.30 | 5.00 | 1.62 | 0.89 | 0.33 | 0.20 | 0.31 | 1.42 | 1/4"-20 UNC | F03 | 1.60 | 10 | 75 IN-LB |
| 1/2" | 0.50 | 4.00 | 2.30 | 5.00 | 1.62 | 0.89 | 0.33 | 0.20 | 0.31 | 1.42 | 1/4"-20 UNC | F03 | 1.60 | 15 | 75 IN-LB |
| 3/4" | 0.75 | 4.30 | 2.90 | 5.80 | 2.21 | 1.29 | 0.41 | 0.28 | 0.43 | 1.65 | 1/4"-20 UNC | F04 | 2.70 | 32 | 120 IN-LB |
| 1" | 0.75 | 4.30 | 2.90 | 5.80 | 2.21 | 1.29 | 0.41 | 0.28 | 0.43 | 1.65 | 1/4"-20 UNC | F04 | 3.00 | 44 | 200 IN-LB |
| 1-1/4" | 1.00 | 4.80 | 3.50 | 7.40 | 2.79 | 1.65 | 0.43 | 0.35 | 0.56 | 1.97 | 1/4"-20 UNC | F05 | 6.20 | 62 | 400 IN-LB |
| 1-1/2" | 1.50 | 5.30 | 4.50 | 14.0 | 3.87 | 2.51 | 0.49 | 0.39 | 0.62 | 2.76 | 5/16"-18 UNC | F07 | 11.3 | 140 | 750 IN-LB |
| 2" | 1.50 | 6.30 | 4.50 | 14.0 | 3.87 | 2.51 | 0.49 | 0.39 | 0.62 | 2.76 | 5/16"-18 UNC | F07 | 11.7 | 120 | 750 IN-LB |

warren

VALVES

STAINLESS STEEL SWING CHECK

200 PSI W.O.G. AT 350°F
SCREWED COVER
THREADED ENDS - ASME B1.20.1 (NPT)
INVESTMENT CASING

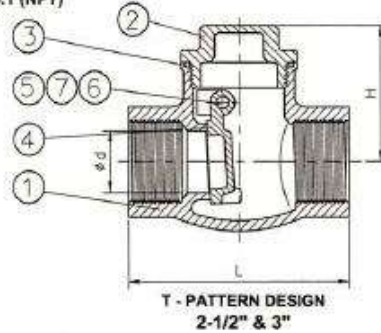
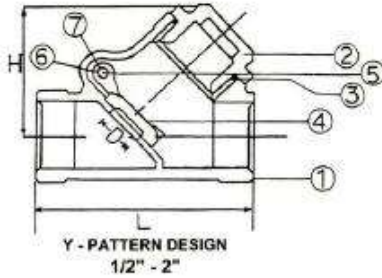


FIGURE NUMBER 223

| NO. | PART NAME | MATERIAL |
|-----|-----------|------------------|
| 1. | Body | ASTM - A351 CF8M |
| 2. | Cover | ASTM - A351 CF8M |
| 3. | Gasket | PTFE |
| 4. | Disc | ASTM - A351 CF8M |
| 5. | Pin | 316 |
| 6. | Plug | 316 |
| 7. | Washer | PTFE |

Hydrostatic Shell Test 300 PSI
Hydrostatic Seat Test 220 PSI

| Size | L | H | D | Weight Lbs. Approx. |
|--------|------|------|------|---------------------|
| 1/2" | 2.75 | 1.75 | .50 | .7 |
| 3/4" | 3.38 | 2.13 | .75 | 1.1 |
| 1" | 3.88 | 2.19 | 1.00 | 1.4 |
| 1-1/4" | 4.50 | 2.63 | 1.25 | 2.2 |
| 1-1/2" | 5.13 | 3.19 | 1.50 | 3.3 |
| 2" | 6.06 | 3.63 | 2.00 | 4.6 |
| 2-1/2" | 6.26 | 3.54 | 2.56 | 8.4 |
| 3" | 7.48 | 4.09 | 3.15 | 13 |

The information contained herein is not intended for specific construction or application purposes. Dimensions, specifications, or materials are subject to change without notice and without liability or obligation to furnish or install such changes or modifications on products previously or subsequently sold.

WARREN VALVE CORPORATION

Headquarters and National Warehouse

Houston, Texas

Local (713) 672-9416

Toll Free (800) 231-6680

Fax (713) 672-8549

Website: www.warrenalloy.com

E-Mail: Warralloy@aol.com

Mexico Toll Free 001-888-263-8613

Regional Warehouses

Charlotte, North Carolina
Salt Lake City, Utah

Local (704) 521-4478
Local (801) 975-1919

Toll Free (800) 331-3672
Toll Free (800) 801-2115

Fax (704) 521-8243
Fax (801) 975-9111

warren

VALVES

STAINLESS STEEL SWING CHECK

200 PSI W.O.G. AT 350°F
SCREWED COVER
THREADED ENDS - ASME B1.20.1 (NPT)
INVESTMENT CASING

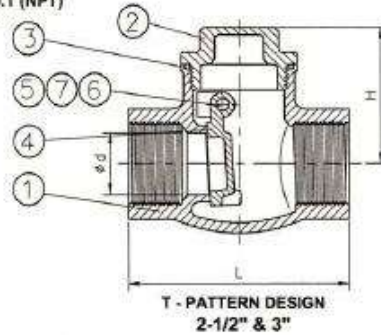
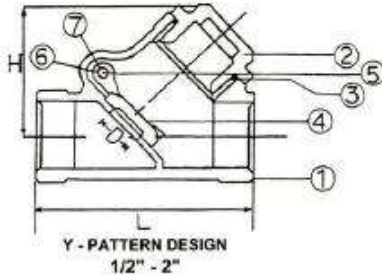


FIGURE NUMBER 223

| NO. | PART NAME | MATERIAL |
|-----|-----------|------------------|
| 1. | Body | ASTM - A351 CF8M |
| 2. | Cover | ASTM - A351 CF8M |
| 3. | Gasket | PTFE |
| 4. | Disc | ASTM - A351 CF8M |
| 5. | Pin | 316 |
| 6. | Plug | 316 |
| 7. | Washer | PTFE |

Hydrostatic Shell Test 300 PSI
Hydrostatic Seat Test 220 PSI

| Size | L | H | D | Weight Lbs. Approx. |
|--------|------|------|------|---------------------|
| 1/2" | 2.75 | 1.75 | .50 | .7 |
| 3/4" | 3.38 | 2.13 | .75 | 1.1 |
| 1" | 3.88 | 2.19 | 1.00 | 1.4 |
| 1-1/4" | 4.50 | 2.63 | 1.25 | 2.2 |
| 1-1/2" | 5.13 | 3.19 | 1.50 | 3.3 |
| 2" | 6.06 | 3.63 | 2.00 | 4.6 |
| 2-1/2" | 6.26 | 3.54 | 2.56 | 8.4 |
| 3" | 7.48 | 4.09 | 3.15 | 13 |

The information contained herein is not intended for specific construction or application purposes. Dimensions, specifications, or materials are subject to change without notice and without liability or obligation to furnish or install such changes or modifications on products previously or subsequently sold.

WARREN VALVE CORPORATION

Headquarters and National Warehouse

Houston, Texas

Local (713) 672-9416

Toll Free (800) 231-6680

Fax (713) 672-8549

Website: www.warrenalloy.com

E-Mail: Warralloy@aol.com

Mexico Toll Free 001-888-263-8613

Regional Warehouses

Charlotte, North Carolina
Salt Lake City, Utah

Local (704) 521-4478
Local (801) 975-1919

Toll Free (800) 331-3672
Toll Free (800) 801-2115

Fax (704) 521-8243
Fax (801) 975-9111

warren

VALVES

STAINLESS STEEL SWING CHECK

200 PSI W.O.G. AT 350°F
 SCREWED COVER
 THREADED ENDS - ASME B1.20.1 (NPT)
 INVESTMENT CASING

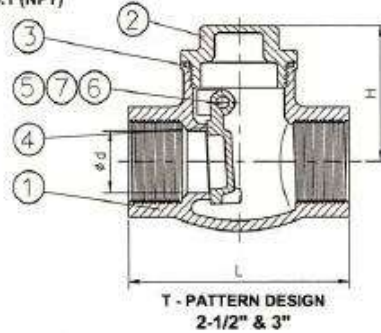
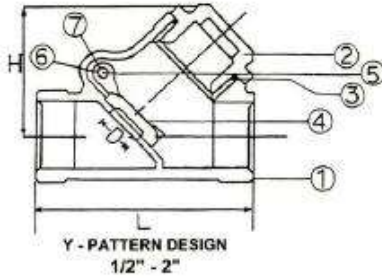


FIGURE NUMBER 223

| NO. | PART NAME | MATERIAL |
|-----|-----------|------------------|
| 1. | Body | ASTM - A351 CF8M |
| 2. | Cover | ASTM - A351 CF8M |
| 3. | Gasket | PTFE |
| 4. | Disc | ASTM - A351 CF8M |
| 5. | Pin | 316 |
| 6. | Plug | 316 |
| 7. | Washer | PTFE |

Hydrostatic Shell Test 300 PSI
 Hydrostatic Seat Test 220 PSI

| Size | L | H | D | Weight Lbs. Approx. |
|--------|------|------|------|---------------------|
| 1/2" | 2.75 | 1.75 | .50 | .7 |
| 3/4" | 3.38 | 2.13 | .75 | 1.1 |
| 1" | 3.88 | 2.19 | 1.00 | 1.4 |
| 1-1/4" | 4.50 | 2.63 | 1.25 | 2.2 |
| 1-1/2" | 5.13 | 3.19 | 1.50 | 3.3 |
| 2" | 6.06 | 3.63 | 2.00 | 4.6 |
| 2-1/2" | 6.26 | 3.54 | 2.56 | 8.4 |
| 3" | 7.48 | 4.09 | 3.15 | 13 |

The information contained herein is not intended for specific construction or application purposes. Dimensions, specifications, or materials are subject to change without notice and without liability or obligation to furnish or install such changes or modifications on products previously or subsequently sold.

WARREN VALVE CORPORATION

Headquarters and National Warehouse

Houston, Texas

Local (713) 672-9416

Toll Free (800) 231-6680

Fax (713) 672-8549

Website: www.warrenalloy.com

E-Mail: Warralloy@aol.com

Mexico Toll Free 001-888-263-8613

Regional Warehouses

Charlotte, North Carolina
 Salt Lake City, Utah

Local (704) 521-4478
 Local (801) 975-1919

Toll Free (800) 331-3672
 Toll Free (800) 801-2115

Fax (704) 521-8243
 Fax (801) 975-9111